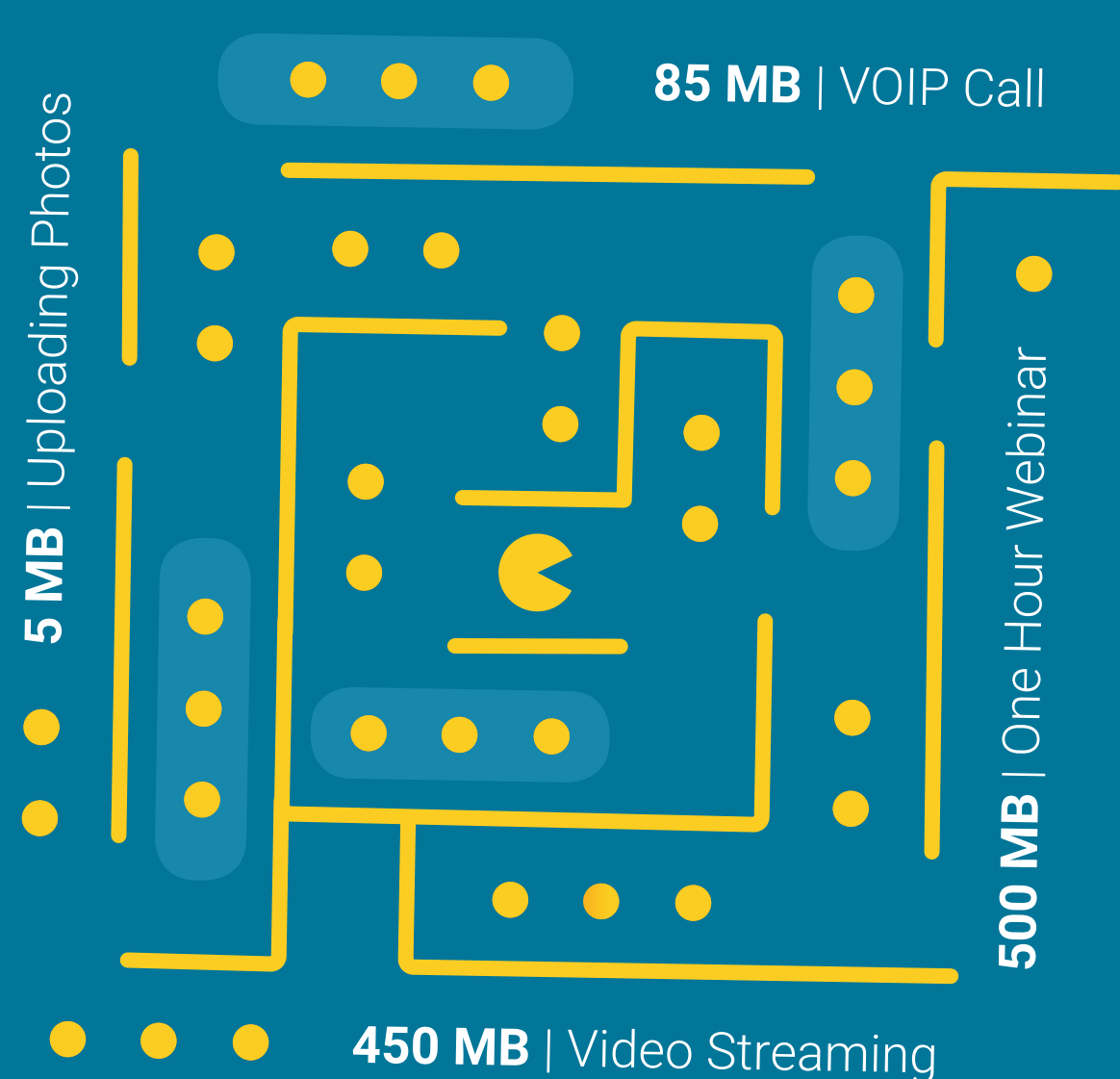
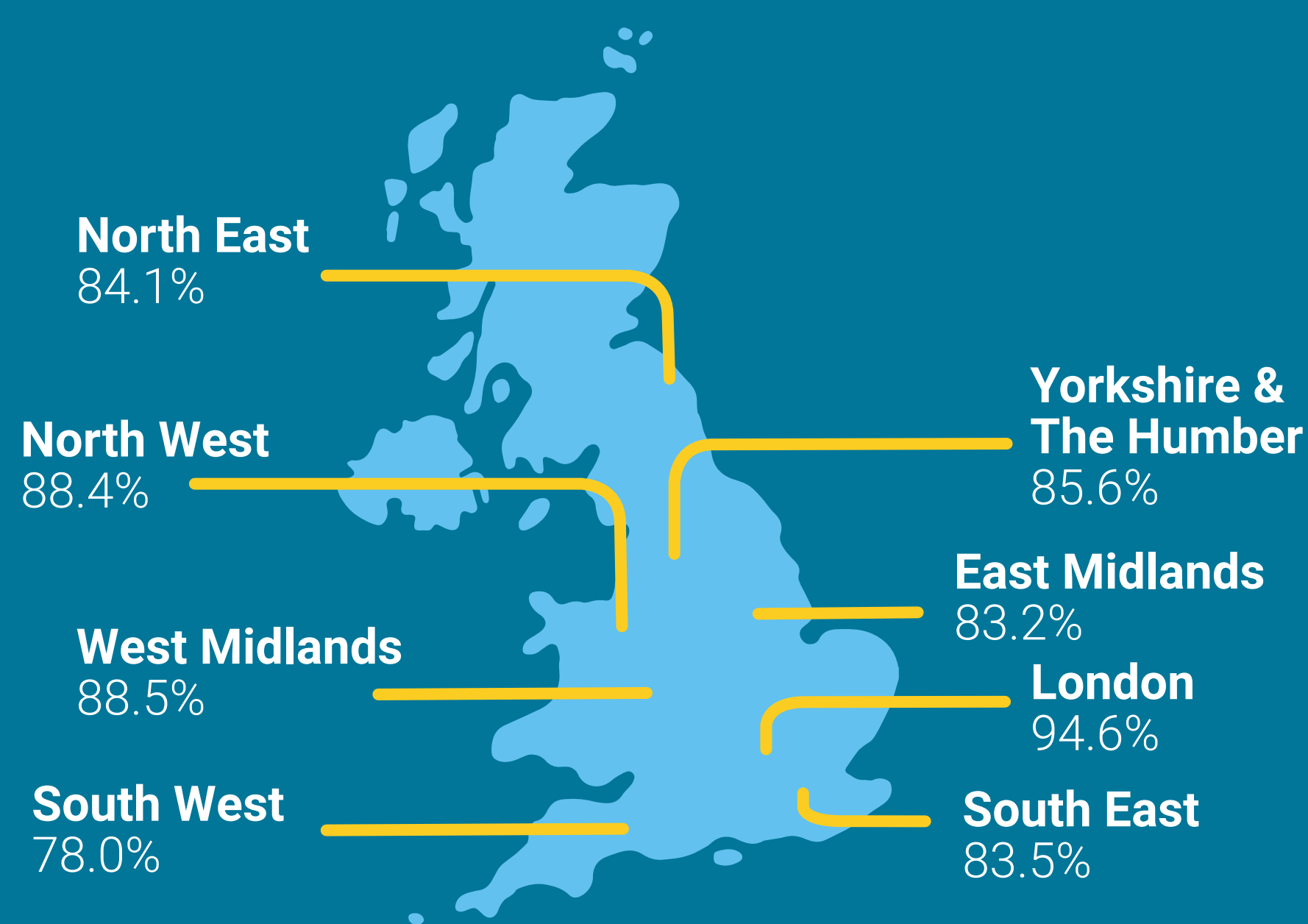


Connectivity.

Speeding Into The Future

Coverage of superfast broadband for business premises in England by 2020, by region.



What's Eating Up Your Bandwidth?

How demanding is your business?

Ultra High

- Video Conferencing
- Bandwidth Hungry Applications

Moderate

- Wi-Fi
- File Sharing
- Cloud Services

High

- Backup
- Webinar Streaming
- Uploading Large Files

Light

- Web Browsing
- Social Media
- VoIP Calls

How Happy Are You With Your Connectivity?

Chances are, the smaller your business, the less likely your internet speed is keeping pace with your business needs.

% of businesses happy with their internet speed by size*

0 to 9 people	67.1%
10 to 49 people	75.4%
50 to 249 people	87.0%
250 to 999 people	92.3%
1000 + people	94.0%

* ONS: Proportion of UK businesses by maximum contracted internet connection speed, by size of business, 2010 to 2016



Are You Keeping Up With The Times?

How much have business internet speeds increased since 2010?

	2010	2016
Less than 2Mbps	10.8%	4.4%
2Mbps - 10Mbps	46.7%	17.8%
10Mbps - 30Mbps	21.2%	24.1%
30Mbps - 100Mbps	5.0%	27.8%
100Mbps or more	4.6%	13.7%

Use our Decision Tree to choose the right Connectivity Solution



info@ChessICT.co.uk | www.ChessICT.co.uk