



Back Up Your Data



with Chess Data Protect
for Microsoft 365



Are disgruntled employees a danger to your business data?

People often delete data before they quit their role if they suspect they are going to be fired, or to spite a boss or coworker they are angry at.

Hackers can also be the culprit, surpassing security systems to delete or corrupt data. Whether internal or external, untrustworthy users are a reality.

Large organisations all across the world have fallen victim to insider sabotage and Tesla's and Marriot's being some of the most noteworthy cases from the last year.

To maintain a secure and compliant business environment, you want a backup solution that doesn't just back up your data, but enables you to restore it quickly, easily, and effectively.

"63% of respondents admitted they had taken company data with them when they left a job."

– Code42 Survey

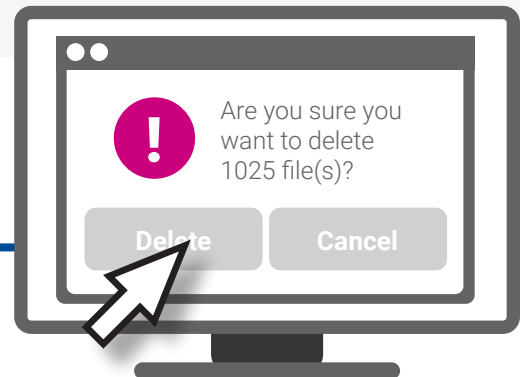
"61% of IT leaders believe employees have put sensitive company data at risk maliciously in the last 12 months."

– Egress

"The number of insider-related breaches rises every year."

– Verizon 2019 Data Breach Investigations Report





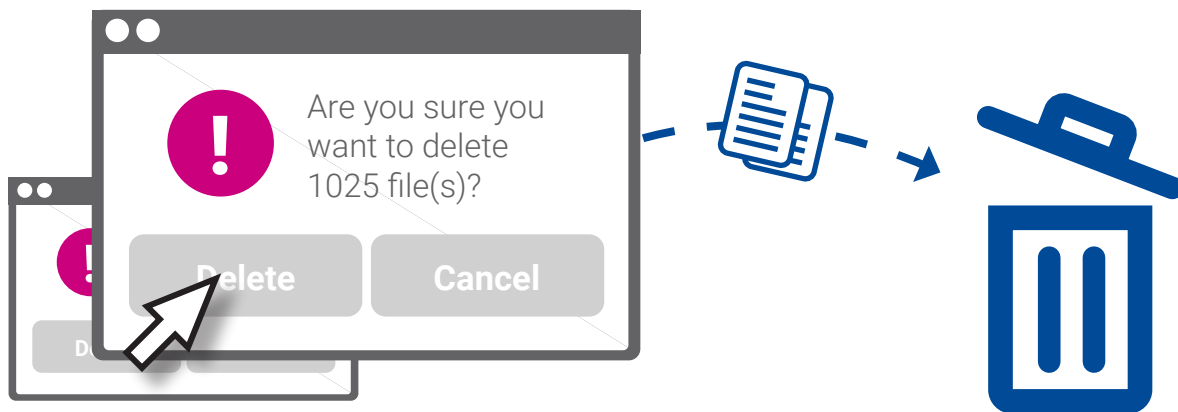
Human Error is the Leading Cause of Business Data Loss

“Too many organisations only check backups in severe weather when more realistically the outage can happen at any time due to human error”

– Disaster Recovery Preparedness Council

Accidentally deleting data is one of the most common causes for business data loss. Especially in the cloud and in collaboration apps, users can easily delete a project put on hold or a shared project by mistake. Also, users can overwrite their work by mistake through the auto-save functions.

A back-up solution is the best way to ensure you can recover information lost due to human error.



Cyber Attacks

“94% of organisations experienced a business-impacting cyberattack or compromise within the past 12 months.”

– The Rise Of The Business-Aligned Security Executive, Forester, 2020

“1 in 10 Cyber Breaches Discovered on Mobile Devices ”

– Seven Truth about Endpoint Security Report

Microsoft recommends 3rd party backup as the only way to recover from data loss associated with ransomware encryption. The reason for that is that often the cyber agent will encrypt your data in a way that you cannot use the Microsoft integrated File History or System Protection backups.



What is Chess Data Protect for Microsoft 365?

Data Protect for Microsoft 365 is a cloud-to-cloud backup product offering an all in-one backup, restore and export solution that covers Exchange Online, OneDrive, SharePoint Online, and Microsoft Teams.

It ensures that businesses can access, control, and most importantly protect the data that employees entrust to the cloud.

Did You Know?

1 in 3 businesses report
losing data stored in
cloud-based applications

Why do you need Chess Data Protect for Microsoft 365?

While Microsoft 365 does include primitive restore capabilities for lost data, two major issues arise when using their tools: lost data and lost time.

Therefore, an independent data backup separated from the app itself is necessary to avoid the most common data loss pitfalls.

Cut Costs with Chess Data Protect

Eliminate unnecessary licence fees for departed employees by storing data in the product's private cloud.

In the case of staff furloughs you have two options: to keep the licences active and continue paying monthly fees, or to deprovision them and back up the data. Eliminate unnecessary licence fees for departed employees by storing data in the product's private cloud.

“We could not have picked a better time to implement the changes from a standard in-situ server to a cloud-based solution. Our enforced homeworking would be considerably more difficult without this. Like all IT projects, there are always a few challenges, but these were tackled with knowledge and enthusiasm and quickly sorted out. The aftercare is great and we are looking forward to discussing further potential improvements to our systems.”

Simon Fielding, Finance Director, The Kay Group



Permanent Deletion

When a SharePoint Online administrator deletes data, the information is kept in the Recycle Bin for 93 days. After that it is automatically and permanently deleted, and there is no rollback option.



Inactive Licences

An active Microsoft 365 licence is required to access data. Inactive or deprovisioned user data is permanently deleted, and there is no rollback option.



Ransomware

Microsoft recommends 3rd party backup as the only way to recover from data loss associated with ransomware encryption.

5 Top Reasons for Data Loss



Service Outages

Planning for the unexpected is key to recovering quickly if an outage occurs.

In March 2020, Microsoft Teams hit 44 million daily active users putting large strain on the platform.



Time Lost in Restoring Files

Microsoft only take service requests for outages and not to help you with any data loss issues.

Chess Data Protect Features and Options

Where the Microsoft technology falters, human input and third-party solutions are needed to achieve maximum data security.

Backups include daily snapshots of each user's data, allowing you to browse through a user's account at a specific point in time. Avoid data loss from ransomware by restoring entire accounts to a designated point in time before an attack occurred.

Here at Chess, we have two options for Chess Data Protect, below is a breakdown of what each service provides.

Time-based Retention:

When you select this option, Chess will retain your backup snapshots in the Cloud for up to one year, according to the following schedule:

- The service takes three daily backups and retains them for 30 days.
- A single daily backup is retained after 30 days
- Weekly backups are retained for 90 days, then stored on a rolling basis for up to one year.

Infinite Cloud Retention:

This option gives you up to unlimited storage time in the Datto cloud.

- The service takes three daily backups and retains them for 30 days.
- After 30 days, the service saves one daily backup per user for 90 days.
- After 90 days, the service saves one monthly backup for one year, then stores them for the selected retention period.

Security and Compliance

Chess Data Protect backs up data in compliance with Service Organization Control (SOC 1/ SSAE 16 and SOC 2 Type II) reporting standards and supports your HIPAA and GDPR compliance needs.

How does Chess Data Protect work?

To maintain a secure and compliant business environment, you want a backup solution that doesn't just back up your data, but enables you to restore it quickly, easily, and effectively.

With the advanced search capabilities and advanced architecture, you can quickly identify the data you are after and restore it in its original format. Plus, there is no need to worry about overwriting existing information with the non-destructive restore functionality.

Most importantly, you can retain user information and save money and effort by automatically holding inactive users' data after their Microsoft 365 licence is deleted.



What does Chess Data Protect back up?

With Chess Data Protect you can restore and export data backed up from Exchange Online, OneDrive SharePoint Online, and Microsoft Teams.



Mail

All emails, attachments, notes and folder structure.



Calendar

Events (including recurrence, attendees, notes), attachments & any calendars owned by users.



Contacts

All contact information excluding photos.



One Drive

All files (including One Note) and folders with file structure intact



Microsoft Teams

Files, conversations, and calendar meetings in Microsoft Teams public channels.



Sharepoint

Custom generic site lists, folder structure, document libraries & sets, site assets, templates, & pages.

Pricing

Set Up Fee	Free*
Monthly Fees (Per User Per Month)	
Time Based Retention	£1.40
Infinite Cloud Retention	£1.60

Installation and set-up are done completely remotely.

*For customers who have Microsoft 365 subscriptions through Chess, installation and set-up is free of charge. Customers who do not have their subscription through Chess, a one-off upfront fee of £150.00 will apply.

Switching is easy and requires no internal resource.

For more information about switching your Microsoft licencing to Chess please speak to your Account Manager or contact us on 0808 252 0755.

Cut Costs for Departed Employees



Unlimited Data Storage



Automatic Backups



About chess[®]

The logo icon for Chess, featuring three stylized spheres in blue, green, and orange, connected by thin lines, positioned to the right of the word 'chess'.

Chess is one of the UK's leading independent and trusted technology service providers, employing 300 skilled people across the UK, supporting over 20,000 organisations.

By leveraging world-class technology, Chess helps you to connect your people, protect your data, grow your business, reduce your costs and work better together, which means your business, your people and your customers can thrive. At Chess, we're passionate about our unique culture and our continuous investment in our people to be industry experts.

We're extremely proud that our people voted us No.1 in 'The Sunday Times 100 Best Companies to Work for' list 2018, and we continue to celebrate more than ten years in the top 100.



REDUCE YOUR COSTS

WORK BETTER TOGETHER

PROTECT YOUR DATA

CONNECT YOUR PEOPLE

GROW YOUR BUSINESS


Consult


Deliver


Support



Adopt

We help you

Protect Your Data

Contact Our Team

 workfromanywhere@ChessICT.co.uk

 0800 688 8858

 ChessICT.co.uk

